

ST AGNES

Catholic Primary School

With Jesus beside us, we do our best

Safeguarding and Child Protection Policy Sept 2023



Updates for 2023/24

Created on: Aut 2022

Author: Based on model policy from Tower Hamlets 2022

Approved by: Full Governing Body

Date: September 22

Last reviewed on: 18th September 23

By: FGB

Next review due by: Sept 24

By: FGB

CONTENTS

1.	CORE SAFEGUARDING PRINCIPLES	4
2.	PURPOSE OF POLICY	4
3.	SAFEGURDING LEGISLATION AND GUIDANCE	4
4.	TOWER HAMLETS SAFEGUARDING CHILDREN PARTNERSHIP SUPPLEMENTARY SAFEGUARDING GUIDANCE	5
5.	TOWER HAMLETS SAFEGUARDING CHILDREN PARTNERSHIP	5
6.	KEY DEFINITIONS	5
7.	ROLES AND RESPONSIBILITIES	6
8.	RIGHTS OF THE CHILD	7
9.	CHILDREN WHO MAY BE POTENTIALLY MORE AT RISK OF HARM	9
10.	CHILDREN IN NEED OF A SOCIAL WORKER	9
11.	CHILDREN REQUIRING MENTAL HEALTH SUPPORT	10
12.	LOOKED AFTER CHILDREN AND PREVIOUS LOOKED AFTER CHILDREN	11
13.	SEND CHILDREN	11
14.	CHILDREN ABSENT FROM EDUCATION & CHILDREN MISSING EDUCATION	12
15.	ELECTIVE HOME EDUCATION	13
16.	WHISTLEBLOWING	14
17.	REPORTING OF ALLEGATIONS AGAINST STAFF & CONCERNS THAT DO NOT MEET THE HARM THRESHOLD	14
18.	STAFF SAFEGUARDING TRAINING INCLUDING TRAINING FOR GOVERNORS	15
19.	VISITORS	16
20.	EXTENDED SCHOOL AND OFF-SITE ARRANGEMENTS	16
21.	IDENTIFYING ABUSE	17
22.	INDICATORS OF ABUSE	17
23.	VOICE OF THE CHILD	18
24.	SAFEGUARDING ISSUES	19
25.	CHILD SEXUAL EXPLOITATION	19
26.	CHILD CRIMINAL EXPLOITATION INCLUDING COUNTY LINES	20
27.	SERIOUS YOUTH VIOLENCE	22
28.	ONLINE HARMS	22
29.	DOMESTIC ABUSE	26
30.	SO-CALLED HONOUR-BASED ABUSE	26
31.	RADICALISATION AND EXTREMISM	28
32.	CHILD-ON-CHILD ABUSE	29
33.	CHILD-ON-CHILD SEXUAL VIOLENCE AND SEXUAL HARASSMENT	30
34.	YOUTH PRODUCED SEXUAL IMAGERY	33
35.	BULLYING (INCLUDING CYBERBULLYING)	34

36.	HOMELESSNESS	35
37.	CHILDREN AND THE COURT SYSTEM	35
38.	CHILDREN WITH FAMILY MEMBERS IN PRISON	36
39.	PRIVATE FOSTERING	36
40.	YOUNG CARERS	36
41.	CHILD ABDUCTION AND COMMUNITY SAFETY INCIDENTS	37
42.	MODERN SLAVERY	37
43.	TAKING SAFEGUARDING ACTION	38
44.	EARLY HELP	38
45.	HANDLING THE REPORTING OR SHARING OF CONCERNS	39
46.	CONFIDENTIALITY AND SHARING INFORMATION	40
47.	REFERRING TO CHILDREN'S SOCIAL CARE	41
48.	ESCALATION PROCEDURES	44

Our Vision and Values

At St. Agnes we believe that although we are all very different we have a way of living, behaving and doing things that allow us to serve as a witness to the Catholic Faith in our Lord Jesus Christ.

Our school motto is: **With Jesus Beside Us We Do Our Best to:**



Believe

We are all valued in God's family and the school family. We **believe** in ourselves and in our abilities.

Persevere

When things get difficult we will **persevere** so that we will grow stronger, realising we can turn to each other and God.

Contribute

We will **contribute** to the life of the school, the parish, the local community and the wider world to which we all belong.

By doing these we will:

Achieve

By being the best we can be, we will **achieve** in making a difference to others and living as God would want us to.

The Child Protection Policy is made available and accessible to staff, parents and visitors and communicated to these stakeholders by the school website, shared drive, staff induction, staff training and paper copies are available through the school office.

Safeguarding policies will be reviewed at the school at least annually unless an incident, new legislation or guidance calls for the need for an instant review.

The school is committed to safeguarding ensuring that each academic year begins with an INSET focussing on and educating staff on safeguarding policies and procedures within the school setting. There are two governors with responsibilities for safeguarding in place, as well as the appropriate staff in school. Safer recruitment practices are followed when recruiting new staff.

Procedures within the Safeguarding and Child Protection Policy apply to all staff, volunteers, visitors and governors. All procedures are written in accordance with Keeping Children Safe in Education 2023 and reflect local safeguarding arrangements including the Tower Hamlets Safeguarding Children Partnership Supplementary Guidance documents on Child Protection Procedures and the Management of Allegations and Concerns that do not meet the Harm Threshold.

1. CORE SAFEGUARDING PRINCIPLES

- The welfare of the child is paramount and underpins all discussions, decision making, and actions taken at the school.
- All concerns shared and reported by children will be taken seriously.
- All children have the right to have a life free from harm, regardless of age, gender, ability, culture, race, language, religion or sexual identity, all have equal rights to protection. This includes children's lives in digital and online environments.
- The child's wishes and feelings will always be taken into account at the school when determining what action to take and what support to provide.
- All staff, including supply staff, contractors and volunteers have an equal responsibility to act immediately on any suspicion or concern shared that may suggest a child is at risk of harm or has been harmed.
- The Designated Safeguarding Lead will ensure that all pupils and staff involved in safeguarding and child protection issues will receive appropriate support.

These 6 core principles are embedded within the school's safeguarding arrangements; underpin the school's safeguarding policies, procedures and systems; and pervade the whole school approach to safeguarding at St Agnes Primary School.

2. PURPOSE OF POLICY

- To provide all staff with key information to enable them to identify safeguarding concerns and know what action to take in response.
- To ensure consistent good practice throughout the school.
- To demonstrate the school's commitment to safeguarding to the whole school community: pupils, parents/carers and other partners.

3. SAFEGUARDING LEGISLATION AND GUIDANCE

The following safeguarding legislation and government guidance have informed the content of this policy:

- Section 175 of the Education Act 2002 (Local maintained schools only)
- The Apprenticeships, Skills, Children and Learning Act 2009 (as amended)
- The Equality Act 2010
- The Safeguarding Vulnerable Groups Act 2006
- Working Together to Safeguarding Children 2018 (Updated July 2022)
- [Keeping Children Safe in Education \(1 September 2023\)](#)
- What to do if you're worried a child is being abused 2015
- [Statutory Framework for the early years foundation stage \(1 September 2021\)](#)
- The Equality Act 2010 and schools: Department advice for school leaders, school staff, governing bodies and local authorities (May 2014)
- The Teacher Standards 2012

4. TOWER HAMLETS SAFEGUARDING CHILDREN PARTNERSHIP SUPPLEMENTARY SAFEGUARDING GUIDANCE

The following Pan-London and THSCP safeguarding guidance has informed the content of this policy:

- [London Child Protection Procedures revised 7th Edition \(London Safeguarding Children Board, 31st March 2023\)](#)
- Tower Hamlets SCP Multi-Agency Safeguarding Thresholds Guidance
- [Tower Hamlets SCP Supplementary Guidance for Schools and Education Settings on Child Protection Procedures - September 2023](#)
- Tower Hamlets SCP LADO Procedures and Flowchart re Allegations made against staff working in the children's workforce - Information about reporting and managing allegations
- [Tower Hamlets SCP Supplementary Guidance for Schools and Education Settings on Managing Allegations of Abuse against Staff – September 2023](#)

5. TOWER HAMLETS SAFEGUARDING CHILDREN PARTNERSHIP

The Children Act 2004 as amended by the Children and Social Work Act 2017 has brought about the establishment of the Tower Hamlets Safeguarding Children Partnership (THSCP). The Partnership coordinates the work of all agencies and ensures that this work is effective in achieving the best outcomes for Tower Hamlets children. The three statutory safeguarding partners have published arrangements to work together to safeguard and promote the welfare of local children, including identifying and responding to their needs. More information about the Tower Hamlets Safeguarding Children Partnership can be found on the website: <http://www.childrenandfamiliestrust.co.uk/the-lscb/>

The school has been named as a 'relevant agency' and as such is under a statutory duty to cooperate with the THSCP arrangements.

The school will engage with the borough's Designated Safeguarding Lead Forums, co-operate with the Rapid Review process and any Child Safeguarding Practice Reviews,¹ participate in the THSCP multi-agency safeguarding training offer, and co-operate with the THSCP's and borough's Section 175/157 School Safeguarding Audit cycles.

6. KEY DEFINITIONS

¹ For more information on the Rapid Review process, Child Safeguarding Practice Reviews and Child Death Reviews, Working Together 2018 Chapters 4 and 5 should be consulted. Working Together 2018 paragraphs 25-27 provide more information on the expectation of school's role within the safeguarding partnership arrangements.

Safeguarding and promoting the welfare of children is:

- protecting children from maltreatment
- preventing the impairment of a child's physical and mental health or development
- ensuring that children grow up in circumstances consistent with the provision of safe and effective care
- taking action to enable all children to have the best outcomes.

The phrase 'child protection' refers to the processes followed to protect children who have been identified as suffering or being at risk of suffering significant harm.

Child includes everyone under the age of 18.

Parent refers to birth parents and other adults who are in a parenting role, for example step-parents, carers, foster carers, and adoptive parents.

Staff refers to all those who work for the school or on behalf of the school, full time or part time, temporary or permanent, in either a paid or voluntary capacity.

7. ROLES AND RESPONSIBILITIES

The Governing Board has the strategic leadership responsibility for safeguarding arrangements at the school. As a collective body it must have regard to all relevant statutory guidance issued, including *Keeping Children Safe in Education*, ensuring that school's safeguarding policies and procedures, including the current Child Protection Policy, are compliant with legislation and statutory guidance, reflect local safeguarding arrangements and are effective for the education setting.

In accordance with the statutory requirement for a named member of the Governing Body to take leadership responsibility for safeguarding at the school the Safeguarding Link Governors are: Fr Javier Ruiz-Ortiz javierruiz@rcdow.org.uk and Sara McKeown-Clifford smckeowncliffo.211@lgflmail.org

The headteacher is responsible for ensuring that the school's Child Protection Policy and other safeguarding policies are communicated to all staff, understood by all members of staff, and followed by all members of staff.

The Designated Safeguarding Lead takes the ultimate lead responsibility for safeguarding arrangements within the school on a day-to-day basis, **including online safety and understanding the filtering and monitoring systems and processes in place.**

The Designated Safeguarding (DSL) Lead is Brid McDaid, Headteacher bmcdaid.211@lgflmail.org

The Deputy DSL is Ciara Manning, Deputy Head cmanning24.211@lgflmail.org

SENDSCO – Louise Wilcox/Brid McDaid lwilcox10@lgflmail.org

Safeguarding Link Governors Fr Javier Ruiz Ortiz javierruiz@rcdow.org.uk

Sara McKeown-Clifford smckeowncliffo.211@lgflmail.org

**If the DSL is not available, then contact the Deputy DSL. If unsuccessful contact
Tower Hamlets Multi Agency Support Hub MASH:**

020 7364 5006 (Option 3) 020 7364 5601/5606

or

Child Protection Advice Line

020 7364 3444

Or

Police

999

All staff should recognise that as frontline workers they are in an important position to identify concerns early, provide help and support to children, promote children's welfare, and prevent concerns from escalating.

All staff have a responsibility to provide a safe environment in which children can learn.

All staff have a responsibility to report safeguarding concerns immediately to the DSL using the yellow reporting sheet available in the staff room. Reports should be made in a timely manner.

If in doubt about any safeguarding matter, staff should **always** speak to the DSL.

All staff are expected to keep the school values at the core of their daily conduct and understand that they have a legal duty to safeguard the child. Ultimately, the best interests of the child must be at the centre of all decision making, behaviours and action taken in relation to children.

8. RIGHTS OF THE CHILD

The school upholds the Human Rights of the child in accordance with the Human Rights Act 1998.² It is unlawful for schools to act in a way that is incompatible with the European Convention on Human Rights. Specifically, the school embeds and upholds the following Convention rights of the child across its safeguarding policies and procedures:

- Article 3: the right to freedom from inhuman and degrading treatment (an absolute right)
- Article 8: the right to respect for private and family life (a qualified right) includes a duty to protect individuals' physical and psychological integrity
- Article 14: requires that all of the rights and freedoms set out in the Act must be protected and applied without discrimination
- Protocol 1, Article 2: protects the right to education.

² <https://www.equalityhumanrights.com/en/human-rights>

In accordance with the Equality Act 2010, the school must not unlawfully discriminate against pupils because of their sex, race, disability, religion or belief, gender reassignment, pregnancy and maternity, or sexual orientation (protected characteristics). **[See St. Agnes School's Equality Policy].**

The school is committed to supporting and taking positive action towards children with regard to particular protected characteristics - including disability, sex, sexual orientation, gender reassignment and race- who may be at a disadvantage and be disproportionately vulnerable.

In fulfilment of the school's Public Sector Equality Duty the school has due regard to the need to eliminate unlawful discrimination, harassment, and victimisation (and any other conduct prohibited under the Equality Act), to advance equality of opportunity and foster good relations between those who share a relevant protected characteristic and those who do not.

Within the context of safeguarding and promoting the welfare of children, St Agnes supports pupils with protected characteristics - including disability, sex, sexual orientation, gender reassignment and race by listening and showing respect to them, ensuring reasonable adjustments have been made and issues raised have been thoroughly investigated and solutions sought. This may include taking positive action, where it can be shown that it is proportionate, to deal with particular disadvantages affecting pupils or students with a particular protected characteristic in order to meet their specific need. This includes a duty to make reasonable adjustments for disabled children, including those with long term conditions. The school could, for example, consider taking positive action to support girls if there was evidence they were being disproportionately subjected to sexual violence or sexual harassment.

As evident in the Serious Case Review Child Q, the school is aware that children from ethnically diverse groups are at risk of adultification whereby their vulnerability as a child is reduced or set aside because of racial bias and stereotypes impacting professional judgement.³ All staff share in the whole school's commitment to ensure equity, diversity and inclusion remain at the centre of the school's safeguarding culture, so that all children receive the care, support, and protection they have the right to receive.

The school shares the London Borough of Tower Hamlet's commitment to being an anti-racist borough and to tackle and eliminate race discrimination. The council's Black, Asian, and Minority Ethnic Inequalities Commission (2021) concluded that racism still exists within institutions and structures in the borough and has developed an action plan to achieve race equality at pace.⁴ The action plan recognises that schools have a powerful and significant role in changing narratives and bringing about social change through education. St Agnes School has reviewed all existing school policies with an anti-racist lens. We have shared good practice and supported those who have experienced racism. We have ensured that there is diversity and representation across all subjects in the curriculum. The school understands its social context within school, within the local area and nationally and seeks to celebrate its richness. There are efforts made to ensure that diversity is

³ <https://chscp.org.uk/wp-content/uploads/2022/03/Child-Q-PUBLISHED-14-March-22.pdf>

⁴ https://www.towerhamlets.gov.uk/ignl/community_and_living/Inequality-Commission/Black-Asian-and-Minority-Ethnic-Inequalities-Commission.aspx

represented within all groupings within the school. Whole school staff training in September 2023 focussed on representation matters and racism was led by Aisha Thomas.

9. CHILDREN WHO MAY BE POTENTIALLY MORE AT RISK OF HARM

All staff should recognise that all children are vulnerable but that some children may be more vulnerable than others and at more risk of harm. Children known to a Social Worker, Looked After Children and Care Leavers are likely to have suffered abuse at some point in their childhood and may be more vulnerable to further abuse including exploitation. Staff need to be aware that other children who may be potentially more at risk of harm include

A Child who:

- is disabled or has certain health conditions and has specific additional needs;
- has special educational needs (whether or not they have a statutory Education, Health and Care Plan);
- has a mental health need;
- is a young carer;
- is showing signs of being drawn in to anti-social or criminal behaviour, including gang involvement and association with organised crime groups or county lines;
- is frequently missing/goes missing from care or from home;
- is at risk of so-called honour based abuse such as Female Genital Mutilation or Forced Marriage;
- is at risk of modern slavery, trafficking or exploitation;
- is at risk of being radicalised or exploited;
- is in a family circumstance presenting challenges for the child, such as drug and alcohol misuse, adult mental health issues and domestic abuse
- is misusing drugs or alcohol themselves;
- has returned home to their family from care; and
- is a privately fostered child;
- is persistently absent from education, including persistent absences for part of the school day.

Staff must be more vigilant in their day-to-day work with children when the above vulnerabilities are known and report all concerns immediately to the Designated Safeguarding Lead.

10. CHILDREN IN NEED OF A SOCIAL WORKER

Children who have been allocated a social worker may have experienced abuse including neglect and belong to a family that has many complex circumstances. Staff should recognise that these children will have experienced adversity and trauma that can leave

them vulnerable to further harm, as well as educationally disadvantaged, and have a negative impact on their attendance, learning, behaviour and mental health.

When making decisions about safeguarding, carrying out a risk analysis, making a safeguarding response to concerns such as unauthorised and persistent absence, and providing pastoral and academic support, the school will take seriously the fact that the child in need of a social worker will require enhanced pastoral and academic support alongside that provided by statutory services. School is also committed to providing further pastoral and academic support to children who have had historic contact with a Social Worker, in recognition that the abuse and trauma is likely to have an impact on the child beyond the duration of the involvement of statutory services. The school will co-operate with the Tower Hamlets Virtual School, which now has a non-statutory responsibility for the strategic oversight of the educational attendance, attainment, and progress of children known to a social worker.

Staff must establish need when supporting children known to a Social Worker and seek support within school or, as a one form entry school, look to outside agencies for additional support where necessary. Staff may need to refer to a play therapist employed 1 day a week in school. They may also need to make a referral to an outside agency such as the school nurse, health visitor, Educational Psychologists or CAHMS. They may also seek to assist in providing additional support through play schemes operating through the LA or independently with support from the LA e.g. First Kicks who run holiday clubs on the school ground. Staff will attend all relevant meetings set by the social worker and where required provide up to date information around welfare, academic profile and attendance/punctuality.

11. CHILDREN REQUIRING MENTAL HEALTH SUPPORT

All staff have an important role in supporting the mental well-being of children and to identify behaviour that may suggest a child is experiencing mental health problems.⁵ All staff need to recognise that mental health may be an indicator that a child has suffered or is at risk of suffering abuse, neglect or exploitation. Staff should be aware of the trauma and mental health impact on a child who has had adverse childhood experiences including abuse, bereavement and separation of parents. Staff should also be aware that the pandemic has had a negative impact on the mental health of many children, some of whom have never previously experienced difficulties with their mental health. However, all staff should be clear that only appropriately trained professionals should attempt to make a diagnosis of a mental health difficulty.

The Mental Health Lead for the school is Louise Wilcox. She is also the SENCo in school Monday and Tuesday weekly. She will liaise with Tower Hamlets Education Wellbeing Service (THEWS) The school has also employed a play therapist, Melisa MacLean, who will work with children on a referral basis one day a week (Friday). The Rainbow

⁵ For further information staff should read relevant government guidance including [Promoting and supporting mental health and wellbeing in schools and colleges](#) (2022) and [Mental Health and Behaviour in Schools](#) (2018)

bereavement trained staff are Faye Kitchener and Lisa Olivierre. Where support falls outside the expertise of staff in school, the SENCDO may request additional support via CAMHS (Children and Adolescence Mental Health Support), the school nurse, the Educational Psychologist

The school has used resources from A place 2Be to support whole school and class assemblies.

12. LOOKED AFTER CHILDREN AND PREVIOUS LOOKED AFTER CHILDREN

The most common reason for children becoming looked after by the Local Authority is as a result of abuse including neglect.

Staff need to have the skills, knowledge and understanding to safeguard Looked After Children and Previously Looked After Children in recognition of their heightened vulnerability.

The DSL and Designated Teacher will work with relevant agencies and take immediate action to safeguard and provide support to this vulnerable group of children. The designated teacher will work with the Tower Hamlets Virtual School to discuss how funding can be best used to support the progress of looked after children in the school and meet the needs identified in the child's personal education plan.

When working with the Virtual School, the Head Teacher, supported by the children's class teacher has worked as the Designated Teacher for the Virtual School and set targets, drawn up action plans and reviewed these with the Virtual School Head Teacher. The Headteacher has ensured that all required information is logged in the appropriate way at the appropriate time so that it can be shared with all the necessary organisations. The Head Teacher is also the DSL and is aware of safeguarding issues that may continue to hinder the children's ability to thrive. All staff working with these children need to show sensitivity and encouragement to ensure that they feel supported but maintain high expectations.

The school's Designated Safeguarding Lead will work with the local authority's Personal Advisor appointed to guide and support Care Leavers, so that any issues or concerns affecting the care leaver can be explored and effective support put in place.

13. SEND CHILDREN

Children with special educational needs and disabilities (SEND) or physical health issues can face additional safeguarding challenges. Additional barriers can exist when recognising abuse and neglect in this group of children, which can include:

- professionals and other adults making assumptions that indicators of possible abuse such as behaviour, mood and injury relate to the child's disability without further exploration

- the potential for children with SEN and disabilities or certain medical conditions being vulnerable to experiencing peer exclusion and isolation and being disproportionately impacted by behaviours such as bullying (including prejudice-based bullying), without outwardly showing any signs;
- children not understanding that what is happening to them is abuse; and
- communication barriers when reporting abuse and difficulties in overcoming these barriers.

For some disabled children, their dependency on parents and carers for practical assistance in daily living, including intimate personal care, may increase their risk of exposure to abusive behaviour. Some children may also have an impaired capacity to resist or avoid abuse. Looked After Disabled Children may be particularly susceptible to possible abuse because of their additional dependency on residential and hospital staff for day-to-day physical care needs.

Further information on safeguarding SEND children is available in the non-statutory guidance [Safeguarding Disabled Children](#) (2009), but staff should speak with the DSL and SENDCO in the first instance.

All staff are regularly trained to understand and be aware of the additional barriers that exist when safeguarding SEND children. All staff need to be aware that SEND children may be more vulnerable when online and using digital platforms, and it is important that Online Safety lessons and related advice are tailored to their individual needs.

- The school supports and safeguards SEND pupils including children who have physical health conditions and safeguarding systems are made accessible to all children. These might include gaining updated training for staff around medical needs; explicit teaching of all social and emotional skills including naming emotions and working through anxiety via zones of regulation; questioning, worry boxes installed in classes at KS2; having daily check in sessions with support workers or class teaching assistants; replacing verbal input with imagery and role play to assist child's comprehension; working in partnership with parents and building close relationships with them to offer bespoke support, establishing links with experts within and outside school to enable additional bespoke support as required.

14. CHILDREN ABSENT FROM EDUCATION & CHILDREN MISSING EDUCATION

The school closely monitors attendance, absence, [suspensions](#), and exclusions. A child [absent from education, whether prolonged or on repeat occasions, can be a vital warning sign of a wide range of safeguarding issues](#) and is a potential indicator of abuse and neglect, including child sexual abuse, child sexual exploitation, [and child criminal exploitation \(county lines\)](#).

In accordance with the DfE's *Working together to improve school attendance*, the school follows up on absences and addresses persistent absence as part of its safeguarding duty. Such an approach prevents the risk of these children becoming children missing education in the future. Staff address daily absence and persistent absence as soon as these problems emerge as part of school's early help response. Staff should be alert to children already known to be vulnerable especially Children known to a Social Worker and Looked After Children, since absence from education may increase known safeguarding risks within the family or in the community. Staff must also be alert to signs of children at risk of travelling to conflict zones, female genital mutilation and forced marriage or radicalisation.

The school will follow the Attendance Policy, chasing up all absences on the morning they occur ideally from 9.30am onwards. Where children have a social worker, the social worker will also be informed of absences. Where concerns exist, the office will liaise with the School's Attendance and Welfare Advisor – making home visits if appropriate. If unsuccessful, the office will then contact Pupil Services in Tower Hamlets or in emergency situations – the police.

When a pupil does not return to school and the whereabouts of the child and their family are not known, the school will make reasonable enquiries and refer the child to the Attendance & Welfare Advisor to support with those enquiries to ascertain the child's whereabouts, and only after these steps have been taken refer to the Local Authority using a Missing Children referral form.

Contact: LBTH CME Officer, Tower Hamlets Education Safeguarding Service, Saadia.Anwer@towerhamlets.gov.uk 020 7364 3426 / 07562 431 817

Children missing education are children of compulsory school age who are not registered pupils at a school and are not receiving suitable education otherwise than at a school. Children missing education are at significant risk of underachieving, being victims of harm, exploitation or radicalisation, and becoming NEET (not in education, employment or training) later in life.

15. ELECTIVE HOME EDUCATION

The school recognises that parents have a legal right to electively home educate their child at home; however, it is expected that the parents' decision to do this is made with their child's best education and best interests at its heart. Staff should be aware that even though most home educated children have a positive experience, this is not the case for all, and home education can mean some children are less visible to the services that are there to keep them safe and supported in line with their needs.

When a parent informs the headteacher of their intention to electively home educate their child, the school will convene and coordinate a meeting between the LA, relevant school staff, parents and all key professionals currently working with the child and family. In accordance with LBTH Policy this meeting has to occur before any final decision is made

by the parents, to ensure that the best interests of the child have been taken fully into account and carefully considered. The occurrence of this meeting is especially important when the children have known vulnerabilities including Children known to a Social Worker and SEND children.

16. WHISTLEBLOWING

All staff members have a responsibility to raise concerns about poor or unsafe practice and potential failures in any aspect of the school's safeguarding arrangements and staff should feel confident that such concerns will be taken seriously by the senior leadership team.

Staff must follow the steps set out in the Whistleblowing Policy contained within this policy.

Where a staff member feels unable to raise an issue with their employer, or feels that their genuine concerns are not being addressed, they should consider other channels available including:

The NSPCC Whistleblowing Advice Line 0800 028 0285 which is free & anonymous, more information can be found at nspcc.org.uk/whistleblowing.

17. REPORTING OF ALLEGATIONS AGAINST STAFF & CONCERNS THAT DO NOT MEET THE HARM THRESHOLD

Allegations of harm may indicate that a person who works with children might pose a risk of harm to children if they continue in that role. When an allegation is made against a member of staff including supply staff and volunteers, the school's Managing Allegations Procedures should be followed, and all action taken needs to be in line with KCSIE 2023 Part 4 and the THSCP Supplementary Guidance- Managing Allegations of Abuse against Staff – September 2023.

An allegation is made against a member of staff including supply staff, volunteers, contractors and governors, when an individual has:

- behaved in a way that has harmed a child, or may have harmed a child;
- possibly committed a criminal offence against or related to a child;
- behaved towards a child or children in a way that indicates he or she may pose a risk of harm to children; or
- behaved or may have behaved in a way that indicates they may not be suitable to work with children.

All staff must report all allegations, irrespective of the source, directly to the headteacher and ensure that it is put in writing, signed and dated. If the subject of the allegation is the headteacher, then the allegation should be directly reported to the Chair of Governors.

On receipt of a report of an allegation, the headteacher will make immediate contact with the Local Authority Designated Officer for an initial discussion. If the allegation concerns the headteacher, then the Chair of Governors shall make contact with the LADO.

When an allegation is made against a supply member of staff, the headteacher will be the case manager and take the lead in contacting the LADO.

When schools receive a report of an allegation relating to an incident that happened when an individual or external organisation was making use of the school premises for activities involving children, the headteacher should seek the advice of the LADO.

Allegations concerning staff who no longer work at the school, or historical allegations will be reported to the police.

LBTH Local Authority Designated Officer (LADO): Melanie Benzie

Email: Melanie.Benzie@towerhamlets.gov.uk or LADO@towerhamlets.gov.uk

Telephone: 0207364 0677

In accordance with the Early Years Framework registered Early Years settings must notify Ofsted of serious allegations of harms and the actions taken by the setting as soon as is reasonably practicable but no longer than 14 days after an incident. A registered provider who, without reasonable excuse, fails to comply with this requirement, commits an offence.

Concerns about staff that do not initially seem to fulfil the allegation criteria set out above are known as Concerns that do not meet the Harm Threshold, sometimes called low-level concerns, not because they are insignificant but because they do not initially seem to meet the harm threshold. Staff should report and self-report such concerns in accordance with the school's procedures which are found in the school's Staff Code of Conduct. Contact will be made with the LADO for advice and guidance when appropriate as part of the Headteacher's or Chair of Governor's response to the report. These concerns are referred to in the Staff Code of Conduct.

All staff should understand their responsibility to report **all concerns** about staff conduct which has taken place at the school or outside of the school including online environments, no matter how small or insignificant they might be perceived to be.

18. STAFF SAFEGUARDING TRAINING INCLUDING TRAINING FOR GOVERNORS

In addition to School Staff, Governors and Trustees are required to have compulsory safeguarding training as part of their induction and to maintain their knowledge through regular safeguarding training and updates.

Through regular safeguarding training and updates staff are given the relevant skills and knowledge to safeguard children effectively and governors/trustees will be empowered and

equipped to provide strategic challenge and gain assurance that effective safeguarding arrangements are in place.

Staff training includes an annual update on relevant online safety guidance. Induction for new staff will include a session to introduce the schools' ICT Security Policy and Staff Acceptable Use agreement as well as the Pupil Online Safety Policy. This CPD will ensure that all staff have an understanding of the expectations, applicable roles, and responsibilities in relation to filtering and monitoring systems in place at the school

At the beginning of each academic year, the school focuses on safeguarding training for its first INSET in September. Staff are signposted to electronic copies of material used in training as well as hard copies of KCSiE Part 1 and Annex A. Those staff who miss training are signposted to where they can get the relevant material and are asked to undertake a quiz once they have read the relevant sections of KCSiE. All safeguarding policies are given to new staff and staff working with them are asked to induct them in safeguarding protocols especially where they see or hear something inappropriate. In 2020-21 all staff and the link governor participated in Prevent Training. The lead DSL has completed relevant training in safer recruitment and in May 2022 completed training from Tower Hamlets on Managing Harmful Behaviour (MHB). The DSL and Deputy DSL also completed Safeguarding in Education Training on 15th June 2023. The Chair of the Governing Body completes annual audits and ensures that members of the Board take part in safeguarding training. They are also signposted to relevant policies and KCSiE 2023 part 1.

19. VISITORS

Visitors must sign in at the front office once they have been buzzed through the electronic gates. They are given a visitors badge. They are then accompanied by a member of staff to the appropriate person. (See visitors Policy for more information).

When a Social Worker, Police Officer or another professional visits the school to meet with a child as part of statutory investigations or other work, the ultimate safeguarding responsibility remains with the school. The school is aware of the need for the child to have an appropriate adult when interviewed by the Police in accordance with the [PACE Code C statutory guidance](#).

20. EXTENDED SCHOOL AND OFF-SITE ARRANGEMENTS

Extended and off-site activities are subject to a risk assessment and the school's Safeguarding and Child Protection Policy and procedures apply where there is direct management and supervision by the school.

When pupils attend off-site activities, including day and residential visits and work-related activities, the school ensures that effective safeguarding arrangements are in place. There is a risk assessment that focuses on adequate supervision and mitigation of potential risks that links to Tower Hamlets online system Evolve, which in turn supports the planning, approval and management of education visits and extra-curricular activities.

Where services or activities are provided separately by another organisation **outside of normal school hours**, the school will seek assurance that the organisation has effective safeguarding policies and procedures in place. **This applies regardless of whether or not the children who attend any of these services or activities are pupils on the school register. The safeguarding standards expected of these external organisations, when they are not currently regulated, are set out in the Department for Education's Keeping Children Safe during community activities, after school-clubs and tuition: non-statutory guidance for providers running out-of-school activities (April 2022).**

The school will ensure that all safeguarding requirements are set out clearly in the lease or hire agreement with the organisation, as a condition of use and occupation of the school premises; and that failure to comply would lead to the termination of the agreement.

21. IDENTIFYING ABUSE

Abuse and neglect are forms of maltreatment. Somebody may abuse or neglect a child by inflicting harm, or by failing to act to prevent harm. Abuse may be carried out by adults and other children.

The school is aware that children can be at risk of abuse, harm and exploitation outside of the family home. Such extra familial harms include sexual exploitation, criminal exploitation, serious youth violence, and abuse that occurs on digital and online platforms. All staff especially the DSL and Deputy DSLs must consider whether children are at risk of harm and exploitation in environments outside the family home. All staff should therefore apply a Contextual Safeguarding approach when safeguarding children in the setting.

22. INDICATORS OF ABUSE

Physical - may involve hitting, shaking, throwing, poisoning, burning or scalding, drowning, suffocating or otherwise causing physical harm to a child. Physical harm may also be caused when a parent fabricates the symptoms of, or deliberately induces, illness in a child.

Sexual - involves forcing or enticing a child or young person to take part in sexual activities, not necessarily involving violence, whether or not the child is aware of what is happening. The activities may involve physical contact, including assault by penetration (for example rape or oral sex) or non-penetrative acts such as masturbation, kissing, rubbing and touching outside of clothing. They may also include non-contact activities, such as involving children in looking at, or in the production of, sexual images, watching sexual activities, encouraging children to behave in sexually inappropriate ways, or grooming a child in preparation for abuse. Sexual abuse can take place online, and technology can be used to facilitate offline abuse. Sexual abuse is not solely perpetrated by adult males. Women can also commit acts of sexual abuse, as can other children.

Emotional - the persistent emotional maltreatment of a child such as to cause severe and adverse effects on the child's emotional development. It may involve conveying to a child

that they are worthless or unloved, inadequate, or valued only insofar as they meet the needs of another person. It may include not giving the child opportunities to express their views, deliberately silencing them or 'making fun' of what they say or how they communicate. It may feature age or developmentally inappropriate expectations being imposed on children. These may include interactions that are beyond a child's developmental capability as well as overprotection and limitation of exploration and learning, or preventing the child from participating in normal social interaction. It may involve seeing or hearing the ill-treatment of another. It may involve serious bullying (including cyberbullying), causing children frequently to feel frightened or in danger, or the exploitation or corruption of children. Some level of emotional abuse is involved in all types of maltreatment of a child, although it may occur alone.

Neglect - the persistent failure to meet a child's basic physical and/or psychological needs, likely to result in the serious impairment of the child's health or development. Neglect may occur during pregnancy, for example, as a result of maternal substance abuse. Once a child is born, neglect may involve a parent failing to: provide adequate food, clothing and shelter (including exclusion from home or abandonment); protect a child from physical and emotional harm or danger; ensure adequate supervision (including the use of inadequate care-givers); or ensure access to appropriate medical care or treatment.

The DSL is aware of the borough's [LBTH Neglect Guidance](#) toolkit and all school staff understand their important frontline role in identifying children who may be suffering from Neglect.

23. VOICE OF THE CHILD

All those with a responsibility to safeguard children need to recognise that it takes great courage for a child to share a concern and speak up about any form of abuse especially child sexual abuse.

There are many reasons why children are not able to articulate what they are experiencing. Children may feel embarrassed, humiliated, or are currently being threatened by the perpetrator of abuse. Also, children may not feel ready or know how to tell a trusted adult that they are being abused, exploited, or neglected. They may not even realise that their experiences are harmful.

The barriers preventing a child communicating their concerns may be connected to their vulnerability, disability, sexual orientation, or language. The child's behaviour, **including misbehaviour**, may be the first sign that a child has experienced harm. Staff will therefore exhibit professional curiosity and understand that a child may be communicating a concern through their actions and behaviours and take a safeguarding approach when responding to behaviours.

Staff need to be aware of and promote the systems in place at the school which enable children to share their concerns and report abuse confidently. Children need to be assured that their concerns will be taken seriously by staff and action will be taken to safeguard and protect them. It is also important that staff determine how best to build safe and trusted

relationships with children and young people which facilitates communication and the sharing of concerns.

Children are encouraged to voice their concerns and worries are further focussed on during RSE and PSHE lessons. In KS2 there is a worry box in each class. In KS1 there is a focus on being a good friend and feeling safe as well as respecting personal boundaries. Through the curriculum children begin to understand what is private and are given the language to express concerns as well as words to speak to someone who is at risk of abusing them.

Children are asked to tell a trusted adult within the school and their understanding of this is captured in a wellbeing survey annually. The school also invites the NSPCC in to further reinforce the message of having a voice in an age appropriate way.

24. SAFEGUARDING ISSUES

25. CHILD SEXUAL EXPLOITATION

Child Sexual Exploitation is a form of child sexual abuse. CSE occurs where an individual or group takes advantage of an imbalance of power to coerce, manipulate or deceive a child into sexual activity (a) in exchange for something the victim needs or wants, and/or (b) for the financial advantage or increased status of the perpetrator or facilitator. The victim may have been sexually exploited even if the sexual activity appears consensual. Apart from age other factors that could make a child more vulnerable to exploitation, include gender, sexual identity, cognitive ability, learning difficulties, communication ability, physical strength, status, and access to economic or other resources.

CSE can include both contact (penetrative and non-penetrative acts) and non-contact sexual activity such as involving children in the production of sexual images, forcing children to look at sexual images or watch sexual activities, encouraging children to behave in sexually inappropriate ways or grooming a child in preparation for abuse including via the internet. CSE can occur over time or be a one-off occurrence and may occur without the child or young person's immediate knowledge (e.g. through others copying videos or images they have created and posted on social media).

CSE can affect any child or young person (male or female) under the age of 18 years, including 16 and 17 year olds who can legally consent to have sex. Some children may not realise they are being exploited, as they may believe they are in a genuine romantic relationship. Children may also be exploited by other children, who themselves may be experiencing exploitation – where this is the case, it is important that the child perpetrator is also recognised as a victim.

Staff should be vigilant and be aware of the following indicators of CSE, which is by no means an exhaustive list, and report all concerns immediately to the DSL:

- Children who are in possession of multiple phones and overly anxious to check their phones

- Children who experience sudden changes in behaviour e.g. looking agitated, children who want to leave the school premises at lunchtime
- children who have older boyfriends or girlfriends;
- children who suffer from sexually transmitted infections or become pregnant.
- children who appear with unexplained gifts or new possessions;
- children who associate with other young people involved in exploitation;
- children who suffer from changes in emotional well-being;
- children who misuse drugs and alcohol;
- children who go missing for periods of time or regularly come home late; and
- children who regularly miss school or education or do not take part in education.

Children have been visited by police to discuss knife crime and county lines. This is opened to Y4-Y6. Parents were supported through workshops on these topics. Where concerns arise around possible online child exploitation, referrals are made to MASH as well as seeking additional information from Chris Jordan, Training Officer, TH Safeguarding Team to support the school community. PHSE and RSE lessons also focus on personal care and staying safe. Children in Y6 attend a junior citizenship ½ day in the Autumn term where the children got the opportunity to learn citizenship and life skills with agencies such as Met Police Service, London Fire Brigade, London Ambulance Service and Transport for London amongst others. They take part in interactive scenarios that aim to teach them strategies for leading a safer and more responsible lifestyle.

For further information staff can read the [Home Office Statutory Guidance](#) on Child Sexual Exploitation as well as speaking to the DSL.

26. CHILD CRIMINAL EXPLOITATION INCLUDING COUNTY LINES

Child Criminal Exploitation is where an individual or group takes advantage of an imbalance of power to coerce, control, manipulate or deceive a child into any criminal activity (a) in exchange for something the victim needs or wants, and/or (b) for the financial or other advantage of the perpetrator or facilitator and/or (c) through violence or the threat of violence. The victim may have been criminally exploited even if the activity appears consensual. CCE does not always involve physical contact; it can also occur through the use of technology.

CCE can include children being forced to work in cannabis factories, being coerced into moving drugs or money across the country through County Lines, forced to shoplift or pickpocket, or to threaten other young people. They can also be forced or manipulated into committing vehicle crime or threatening/committing serious violence to others.

Children can become trapped by this type of exploitation as perpetrators can threaten victims (and their families) with violence, or entrap and coerce them into debt. They may be coerced into carrying weapons such as knives or begin to carry a knife for a sense of protection from harm from others. As children involved in criminal exploitation often commit crimes themselves, their vulnerability as victims is not always recognised by adults and

professionals, (particularly older children), and they are not treated as victims despite the harm they have experienced. They may still have been criminally exploited even if the activity appears to be something they have agreed or consented to

All Staff should be aware that girls as well as boys can be risk of CCE. It is important for staff to note that boys or girls being criminally exploited are at higher risk of being sexually exploited.

Staff need to be aware of some of the indicators of CCE:

- Children who are in possession of multiple phones and overly anxious to check their phones
- Children who experience sudden changes in behaviour e.g. looking agitated, children who want to leave the school premises at lunchtime
- children who appear with unexplained gifts or new possessions;
- children who associate with other young people involved in exploitation;
- children who suffer from changes in emotional well-being;
- children who misuse drugs and alcohol;
- children who go missing for periods of time or regularly come home late; and
- children who regularly miss school or education or do not take part in education.

County Lines is a term used to describe gangs and organised criminal networks involved in exporting illegal drugs using dedicated mobile phone lines or other form of “deal line”. This activity can happen locally as well as across the UK - no specified distance of travel is required. Children and vulnerable adults are exploited to move, store and sell drugs and money. Offenders will often use coercion, intimidation, violence (including sexual violence) and weapons to ensure compliance of victims.

Children can be targeted and recruited into county lines in a number of locations including schools (mainstream and special), further and higher educational institutions, pupil referral units, children’s homes and care homes.

Children are also increasingly being targeted and recruited online using social media. Children can easily become trapped by this type of exploitation as county lines gangs can manufacture drug debts which need to be worked off or threaten serious violence and kidnap towards victims (and their families) if they attempt to leave the county lines network.

Many of the indicators of children involved in County Lines are as described above under CCE. However, in addition they can include children who:

- go missing from education and/or home and subsequently found in areas away from their home;
- have been the victim or perpetrator of serious violence (e.g. knife crime);
- are involved in receiving requests for drugs via a phone line, moving drugs, handing over and collecting money for drugs;
- are exposed to techniques such as ‘plugging’, where drugs are concealed internally to avoid detection;

- are found in accommodation that they have no connection with, often called a 'traphouse or cuckooing' or hotel room where there is drug activity;
- owe a 'debt bond' to their exploiters;
- have their bank accounts used to facilitate drug dealing

Further information on the signs of a child's involvement in county lines is available in guidance published by the Home Office and The Children's Society [County Lines Toolkit For Professionals](#).

[N.B. Primary schools should be alert to the increase vulnerability of children under 10 years old being exploited because they are under the age of criminal responsibility]

27. SERIOUS YOUTH VIOLENCE

All staff are aware of indicators, which may signal that children are at risk from, or are involved with serious violent crime. These may include increased absence from school, a change in friendships or relationships with older individuals or groups, a significant decline in performance, signs of self-harm or a significant change in wellbeing, or signs of assault or unexplained injuries. Unexplained gifts or new possessions could also indicate that children have been approached by, or are involved with, individuals associated with criminal networks or gangs.

28. ONLINE HARMS

Online Safety across the school

The school is committed to ensuring that Online Safety is threaded through the wider curriculum and the life of the school community. This is achieved through safeguarding arrangements including policy and procedure, the curriculum, staff training and induction, the role of the DSL, and parental engagement.

Balancing Rights and Harms

Children should have the right to explore the digital environment and also the right to be safe there. However, technology often provides the platform that facilitates harm, and the use of technology has become a significant component of many safeguarding issues.

Examples of this include child sexual exploitation; child criminal exploitation; radicalisation; sexual predation/grooming; and forms of child-on-child abuse **such as cyberbullying and explicit image sharing**.

A Whole School Approach

An effective approach to online safety empowers a school or college to protect and educate the whole school community in their use of technology and establishes mechanisms to identify, intervene in, and escalate any incident where appropriate. |

Parents and Families

As part of a whole school approach the school is committed to ensuring that all parents and families are given support and guidance on how to keep their children safe online. We do this by:

- Publishing Online Safety information, advice and guidance on the school website
- Offering informal support on a 1:1 basis where necessary
- Running an annual parent workshop/presentation on Online Safety
- Where appropriate alerting parents by texts, or letter to urgent issues known to be affecting young people.

Behaviour

In accordance with Behaviour in Schools. Advice for headteachers and school staff (September 2022), the school promotes as part of its culture of excellent standards of behaviour that the same standards of behaviour are expected online as apply offline, and that every pupil should be treated with kindness, respect and dignity.

Cyberbullying

The school includes support and guidance for children involved in cyberbullying as part of the Behaviour and Anti-Bullying policies. It is also embedded across all PHSE, RSA and Citizenship lessons and learning.

Areas of Risk

The breadth of issues can be categorised into four areas of risk that forms the framework for the school's approach to Online Safety:

CONTENT: being exposed to illegal, inappropriate or harmful material; for example, pornography, fake news, racism, prejudice-based content, misogyny, self-harm, suicide, anti-Semitism, radicalisation and extremism;

CONTACT: being subjected to harmful online interaction with other users; for example, peer to peer pressure, commercial advertising as well as adults posing as children or young adults with the intention of grooming or exploiting them for sexual, criminal; financial or other purposes;

CONDUCT: personal online behaviour that increases the likelihood of, or causes, harm; for example making, sending and receiving explicit images (e.g. consensual or non-consensual sharing of nudes and semi-nudes), and/or pornography, sharing other explicit images and online bullying.

COMMERCE: risks such as online gambling, inappropriate advertising, phishing and or financial scams. When pupils are at risk of phishing, school can reports concerns to the Anti-Phishing Working Group (<https://apwg.org/>).

Child-on-Child Abuse

Child-on-child abuse can be in the form of abusive, harassing, and misogynistic messages, the non-consensual sharing of indecent images, especially around chat groups, and the

sharing of abusive images and pornography, to those who do not want to receive such content. In many cases abuse will take place concurrently via online channels and in daily life.

Cybercrime

Cybercrime is a criminal activity committed using computers and/or the internet. It is broadly categorised as either 'cyber-enabled' (crimes that can happen off-line but are enabled at scale and at speed on-line) or 'cyber dependent' (crimes that can be committed only by using a computer).

When there are concerns about a child in this area, staff should notify the DSL, who will consider referring the child into the Cyber Choices programme (cyberchoices.uk), which provides early intervention where children are at risk of committing, or being drawn into, low level cyber-dependent offences and divert them to a more positive use of their skills and interests.

Filtering and Monitoring Systems

In accordance with the Prevent Duty, the school has appropriate filtering and monitoring systems in place when children access the internet via school devices and when using the school network.

The school's Internet filtering and monitoring system is provided by the London Grid for Learning (LGfL) and is managed for the school by Connetix staff who can liaise directly with the LGfL filtering team.

The school meets the Department for Education's Filtering and Monitoring Standards through:

- identifying and assigning roles and responsibilities to manage filtering and monitoring systems. – **currently Connetix staff**
- reviewing filtering and monitoring provision at least annually using a nationally recognised testing framework from the SWGfL (South West Grid for Learning).
- blocking harmful and inappropriate content without unreasonably impacting teaching and learning.
- having effective monitoring strategies in place that meet their safeguarding needs.

The filtering system is monitored directly by staff working with pupils. Any attempts to access blocked sites are noted by the LGfL and are monitored regularly by Connetix.

Staff can also have input into the filtering arrangements by designating specific sites as unsuitable and asking for them to be blocked, or arranging for suitable sites to be unblocked to facilitate teaching and learning.

Reporting Concerns

Staff should report Online Safety concerns about pupils to the Designated Safeguarding Lead as with all other safeguarding concerns. When it comes to the safety and well-being of the child, the response to the risks and harms that children may experience in the online or digital environment should be no different than the offline, face to face world. For most children there is little distinction between the online and face to face interactions as the two environments often intersect with one another in their daily lives. Staff should recognise that children's experience of abuse in the digital environment may be even more pronounced, where the identity of the abuser is unknown and the abuse can continue 24 hours a day, 7 days a week.

Vulnerable Children

Staff should be aware that children with known vulnerabilities such as SEND, Looked After Children(LAC) and Previously Looked After Children (PLAC) and Children known to a Social Worker, may be more vulnerable to harm and exploitation in the online digital environments.

Online Safety Policies

The school has two key policies that provide the detail of ensuring that online safety is embedded in school life

Pupil Online Safety Policy

This policy includes information on how the school teaches children to understand and develop confidence in key aspects of online safety.

It includes a pupil agreement form for both KS1 and KS2 pupils that they sign each year.

Staff ICT Security Policy

This policy contains the details on all the key aspects of online safety and staff use of ICT and online facilities at school and at home while on school business.

Staff Acceptable Use Agreement

This is signed annually by staff and includes up to date details of online safety and ICT security expectations for all staff

Other Related Policies

Other policies that relate to Online Safety include:

- Pupil Behaviour Policy
- Anti-Bullying Policy
- Remote Learning Policy
- Data Protection and GDPR Policy

The school updates the Online Safety Policies annually in line with local, national, and international guidelines and best practice.

If new technology is introduced, then a risk assessment is carried out and relevant policies are updated accordingly

29. DOMESTIC ABUSE

The Domestic Abuse Act 2021 recognises the impact of domestic abuse on children as victims in their own right, if they see, hear or experience the effects of abuse. The statutory definition of domestic abuse recognises that domestic abuse may occur in different types of relationships, including ex-partners and family members and is not restricted to the family home. According to the definition the person perpetrating the abuse and the person to whom the abusive behaviour is directed towards must be aged 16 or over and be “personally connected”. Domestic Abuse may involve a range of abusive behaviours, which may be a single incident or a pattern of abuse, including physical, sexual, emotional and economic abuse, and coercive and controlling behaviour.

Staff should be aware that all children can witness and be adversely affected by domestic abuse in the context of their home life where domestic abuse occurs between family members. Experiencing domestic abuse and/or violence can have a serious, long lasting emotional and psychological impact on children and have a detrimental and long-term impact on their health, well-being, development, and ability to learn. In some cases, a child may blame themselves for the abuse or may have had to leave the family home because of the abuse. Children can also experience domestic abuse within their own intimate relationships. This form of child-on-child abuse is sometimes referred to as ‘teenage relationship abuse’.

In response to safeguarding reports received about children involving Domestic Abuse, the school will make contact with Children’s Social Care for advice and guidance. Where appropriate, the school will complete a DASH Risk Assessment with the individual reporting as a victim of Domestic Abuse.

The school has signed up to the Metropolitan Police’s Operation Encompass project. Operation Encompass ensures that when police are called to an incident of domestic abuse, and where there are children in the household, the police will notify the school’s Designated Safeguarding Lead before the child arrives at school the following day, so that the school can provide ‘silent support’ to the child and follow up with Children’s Social Care where appropriate.

30. SO-CALLED HONOUR-BASED ABUSE

So-called ‘honour’-based abuse (HBA) encompasses incidents or crimes which have been committed to protect or defend the honour of the family and/or the community, including female genital mutilation (FGM), forced marriage, and practices such as breast ironing. Abuse committed in the context of preserving ‘honour’ often involves a wider network of family or community pressure and can include multiple perpetrators. All forms of so-called Honour Based Abuse are abuse (regardless of the motivation) and should be handled and escalated as such. Professionals in all agencies, and individuals and groups in relevant communities, need to be alert to the possibility of a child being at risk of Honoured Based Abuse, or already having suffered Honour Based Abuse.

If staff have a concern regarding a child who might be at risk of Honour Based Abuse or who has suffered from Honour Based Abuse, they should speak to the Designated Safeguarding Lead, who will follow local safeguarding procedures.

Female Genital Mutilation

In England, Wales and Northern Ireland, FGM is a criminal offence under the Female Genital Mutilation Act 2003.

See [HM Government Multi-Agency Statutory Guidance on FGM](#), Updated 30th July 2020 for further information.

Section 5B of the Female Genital Mutilation Act 2003 (as inserted by section 74 of the Serious Crime Act 2015) places a statutory duty upon **teachers**, along with regulated health and social care professionals in England and Wales, to report to the police where they discover (either through disclosure by the victim or visual evidence) that FGM appears to have been carried out on a girl under 18. Those failing to report such cases may face disciplinary sanctions. It will be rare for teachers to see visual evidence, and they should **not** be examining pupils or students. Teachers **must** personally report to the police cases where they discover that an act of FGM appears to have been carried out. However, teachers should notify the Designated Safeguarding Lead of this action as well as reporting the disclosure of FGM in line with school's safeguarding procedures.

The duty on teachers to report to the police does not apply in relation to at risk or suspected cases (i.e. where the teacher does not discover that an act of FGM appears to have been carried out, either through disclosure by the victim or visual evidence) or in cases where the woman is 18 or over. In these cases, teachers should follow local safeguarding procedures and report concerns to the Designated Safeguarding Lead. If in doubt, staff should speak to the Designated Safeguarding Lead.

Forced Marriage

In England and Wales, the practice of Forced Marriage is a criminal offence under the Anti-Social Behaviour, Crime and Policing Act 2014. **Since February 2023 it has also been a crime to carry out any conduct whose purpose is to cause a child to marry before their eighteenth birthday, even if violence, threats or another form of coercion are not used. As with the existing forced marriage law, this applies to non-binding, unofficial 'marriages' as well as legal marriages.** Schools and colleges play an important role in safeguarding children from forced marriage.

School and college staff should contact the Forced Marriage Unit if they need advice or information: Contact: 020 7008 0151 or email fmu@fcdo.gov.uk.

Also see the Forced Marriage Unit's Statutory Guidance and Multi Agency Guidelines [The Right to Choose](#) Updated June 2022]

Virginity Testing and Hymenoplasty

The government has made it illegal to carry out, offer or aid and abet virginity testing or hymenoplasty in any part of the UK, as part of the Health and Care Act 2022.

It is also illegal for UK nationals and residents to do these things outside the UK.

In response to any reports of a child/young person being subject to or at risk of virginity testing or hymenoplasty, the DSL will take action in accordance with the government's non-statutory guidance [Virginity testing and hymenoplasty: multi-agency guidance](#) (July 2022).

31. RADICALISATION AND EXTREMISM

Children are vulnerable to extremist ideology and radicalisation. Similar to protecting children from other forms of harms and abuse, protecting children from this risk is part of the school's safeguarding approach.

- Extremism is the vocal or active opposition to our fundamental values, including democracy, the rule of law, individual liberty and the mutual respect and tolerance of different faiths and beliefs. This also includes calling for the death of members of the armed forces.
- Radicalisation refers to the process by which a person comes to support terrorism and extremist ideologies associated with terrorist groups.
- Terrorism is an action that endangers or causes serious violence to a person/people; causes serious damage to property; or seriously interferes or disrupts an electronic system. The use or threat must be designed to influence the government or to intimidate the public and is made for the purpose of advancing a political, religious or ideological cause.

There is no single way of identifying whether a child is likely to be susceptible to an extremist ideology. Background factors combined with specific influences such as family and friends may contribute to a child's vulnerability. Similarly, radicalisation can occur through many different methods (such as social media or the internet) and settings (such as within the home).

The school completes and reviews a Prevent Risk Assessment. The school also seeks opportunities including through the curriculum to enable pupils to discuss issues of religion, ethnicity and culture and how the school promotes fundamental British Values as part of SMCS (spiritual, moral, social and cultural education).

In LBTH the Prevent Education Officer is Iona Karrman-Bailey, details below:

In LBTH all Prevent referrals related to children should be made through the Multi Agency Safeguarding Hub.

32. CHILD-ON-CHILD ABUSE

Staff must be aware that children may be harmed by other children.

Child-on-child abuse can happen both inside and outside of school including online. It is important that all staff recognise the indicators and signs of child-on-child abuse.

Staff should treat all reports of child-on-child abuse very seriously and make it clear that all forms are unacceptable. As with all forms of abuse the occurrence of child-on-child abuse is an infringement of a child's human rights. Abuse is abuse and will never be dismissed as 'banter' or 'part of growing up'. The school adopts a Zero Tolerance Approach to child-on-child abuse.

All staff should recognise that even though there are no reported cases of child-on-child abuse among pupils, such abuse may still be taking place and that it is simply not being reported.

Staff should be aware that it is more likely that boys will be perpetrators of child-on-child abuse and girls will be victims of child-on-child abuse. However, all forms of child-on-child abuse are unacceptable and will not be tolerated at the school.

Staff should recognise that child-on-child abuse can take many forms and may be facilitated by technology, including:

- bullying (including cyberbullying, prejudice-based and discriminatory bullying)
- physical abuse such as biting, hitting, kicking or hair pulling
- sexually harmful behaviour and sexual abuse including inappropriate sexual language, touching, sexual assault or rape
- causing someone to engage in sexual activity without consent, such as forcing someone to strip, touch themselves sexually, or to engage in sexual activity with a third party
- consensual and non-consensual sharing of nudes and semi-nudes images and/or videos
- teenage relationship abuse – where there is a pattern of actual or threatened acts of physical, sexual or emotional abuse, perpetrated against a current or former partner
- upskirting – taking a picture under a person's clothing without their knowledge and/or permission with the intention of viewing their buttocks or genitals (with or without underwear) to obtain sexual gratification. It is a criminal offence.

- initiation/hazing - used to introduce newcomers into an organisation or group by subjecting them to a series of trials and challenges, which are potentially humiliating, embarrassing or abusive.
- prejudice and discrimination - behaviours which cause a person to feel powerless, worthless or excluded originating from prejudices around belonging, identity and equality, for example, prejudices linked to disabilities, special educational needs, ethnic, cultural and religious backgrounds, gender and sexual identity.

Different gender issues can be prevalent when dealing with child-on-child abuse, for example girls being sexually touched/assaulted or boys being subject to initiation/hazing type violence.

Although a child identifying as LGBTQ+ is not in itself a safeguarding concern, such children may be more vulnerable to forms of child-on-child abuse. This includes children who are perceived to be LGBTQ+ even though they do not identify as such. The school is committed to providing a safe space for LGBTQ+ children to share any concerns they may have and in ensuring an inclusive culture is maintained.

The school will investigate issues raised that relate to Child on Child Abuse. Both children and other relevant parties will be interviewed separately to determine what has occurred. The outcome of the investigation will be relayed to the appropriate parents and sanctions will be imposed. These may include detention, red cards being issued or as a last resort exclusion. There will be efforts to repair friendships if appropriate and ensure that repeat behaviour does not occur. Should staff feel it necessary, LBTH Safeguarding Team will be contacted for advice/support.

The school also uses every opportunity to promote positive behaviour, through assemblies, outside agencies including the NSPCC as well as through every day classroom practice.

33. CHILD-ON-CHILD SEXUAL VIOLENCE AND SEXUAL HARASSMENT

All staff must be aware that sexual violence and sexual harassment can occur between two children of any age and sex and it can happen in any environment including schools, the family home as part of intra-familial abuse and via online platforms. It can also occur when a group of children sexually assault or sexually harass a single child or a group of children. The abuse may be perpetrated by a younger child towards an older child because of an imbalance of power caused by factors such as height difference or cognitive ability.

As part of the school's wider safeguarding culture, staff should maintain an '**it could happen here**' approach in regard to child-on-child sexual violence and sexual harassment and understand that children in the school and the local community may be experiencing such forms of child-on-child abuse, including that facilitated by technology, regardless of the number of reports the DSL receives.

In response to reports of child-on-child abuse, the school will reassure all victims that they are being taken seriously and that they will be supported and kept safe. A victim will never be given the impression that they are creating a problem by reporting sexual violence or

sexual harassment. Nor will a victim ever be made to feel ashamed for making a report. As part of the reassurance to children, it will be made clear to children that the law is in place to protect them from abuse rather than to criminalise them.

Staff should be aware that some groups of children are potentially more at risk. Evidence shows girls, children with special educational needs and disabilities (SEND) and LGBTQ+ children are at greater risk.

Staff should be aware of the importance of:

- challenging inappropriate behaviours;
- making clear that sexual violence and sexual harassment is not acceptable, will never be tolerated and is not an inevitable part of growing up;
- not tolerating or dismissing sexual violence or sexual harassment as “banter”, “part of growing up”, “just having a laugh” or “boys being boys”; and
- challenging physical behaviours (potentially criminal in nature), such as grabbing bottoms, breasts and genitalia, pulling down trousers, flicking bras and lifting upskirts. Dismissing or tolerating such behaviours will help to normalise them.

Sexual violence offences are defined under the Sexual Offences Act 2003

Rape: A person (A) commits an offence of rape if: he intentionally penetrates the vagina, anus or mouth of another person (B) with his penis, B does not consent to the penetration and A does not reasonably believe that B consents.

Assault by Penetration: A person (A) commits an offence if: s/he intentionally penetrates the vagina or anus of another person (B) with a part of her/his body or anything else, the penetration is sexual, B does not consent to the penetration and A does not reasonably believe that B consents.

Sexual Assault: A person (A) commits an offence of sexual assault if: s/he intentionally touches another person (B), the touching is sexual, B does not consent to the touching and A does not reasonably believe that B consents. (Schools should be aware that sexual assault covers a very wide range of behaviour so a single act of kissing someone without consent, or touching someone’s bottom/breasts/genitalia without consent, can still constitute sexual assault.)

Causing someone to engage in sexual activity without consent: A person (A) commits an offence if: s/he intentionally causes another person (B) to engage in an activity, the activity is sexual, B does not consent to engaging in the activity, and A does not reasonably

believe that B consents. (This could include forcing someone to strip, touch themselves sexually, or to engage in sexual activity with a third party.)

Consent is about having the freedom and capacity to choose. Consent to sexual activity may be given to one sort of sexual activity but not another, e.g. to vaginal but not anal sex or penetration with conditions, such as wearing a condom. Consent can be withdrawn at any time during sexual activity and each time activity occurs.

All Staff need to be aware of the following:

- children under the age of 13 can never consent to any sexual activity;
- the age of consent is 16
- sexual intercourse without consent is rape.

Where a report of rape, assault by penetration or sexual assault is made, this will be referred to the police. Whilst the age of criminal responsibility is ten, if the alleged perpetrator is under ten, the starting principle of referring to the police remains. In parallel to this, the school will make a referral to Children's Social Care via the Multi Agency Safeguarding Hub.

Sexual Harassment

Sexual Harassment is 'unwanted conduct of a sexual nature' that can occur online and offline and both inside and outside of school. Sexual harassment is likely to: violate a child's dignity, and/or make them feel intimidated, degraded or humiliated and/or create a hostile, offensive or sexualised environment.

Sexual Harassment may include the following:

- sexual comments, such as: telling sexual stories, making lewd comments, making sexual remarks about clothes and appearance and calling someone sexualised names;
- sexual "jokes" or taunting;
- physical behaviour, such as: deliberately brushing against someone, interfering with someone's clothes (schools and colleges should consider when any of this crosses a line into sexual violence - it is important to talk to and consider the experience of the victim) and displaying pictures, photos or drawings of a sexual nature; and
- online sexual harassment. This may be standalone, or part of a wider pattern of sexual harassment and/or sexual violence such as:
 - consensual and non-consensual sharing of nudes and semi-nudes images and/or videos.
 - sharing of unwanted explicit content;
 - upskirting

- sexualised online bullying
- unwanted sexual comments and messages, including, on social media
- sexual exploitation, co-ercion and threats

On a case-by-case basis the school will liaise with Children's Social Care and the Police as well as specialist services as part of the immediate response to child-on-child sexual harassment and the ongoing support for all the children involved.

Harmful Sexual Behaviours

Children's sexual behaviour exists on a wide continuum, ranging from normal and developmentally expected to inappropriate, problematic, abusive and violent. School recognises that Harmful Sexual Behaviours can, in some cases, progress on a continuum. It is therefore important for all staff to address inappropriate behaviours to help prevent problematic, abusive and/or violent behaviour in the future. Children displaying harmful sexual behaviours have often experienced their own abuse and trauma.

School takes seriously its duty to respond appropriately to all reports and concerns about children's sexual behaviours both online and offline, in and outside of the school, including reports of sexual violence and/or sexual harassment. The DSL has completed relevant training in responding to and managing harmful sexual behaviours and drawn upon appropriate resources such as the AIM Checklists, risk assessments and Assessment Tools when responding to allegations against children of a sexual nature. The DSL will liaise where appropriate with Children's Services, the Police and other specialist services when unsure how to proceed.

34. YOUTH PRODUCED SEXUAL IMAGERY

Youth Produced Sexual Imagery is one of the terms professionals use to describe the sending or posting of nude or semi-nude images, videos or live streams by children and young people under the age of 18 online. The term 'nudes' is used by children and covers all types of image sharing incidents. Alternative terms used by children include 'dick pics' or 'pics'.

The sharing of nudes and semi-nudes can happen publicly online, in 1:1 messaging or via group chats and closed social media accounts. It could also involve sharing between devices via services like Apple's AirDrop which works offline. Nude or semi-nude images, videos or live streams may include more than one child or young person.

Incidents may also occur where:

- children and young people find nudes and semi-nudes online and share them claiming to be from a peer

- children and young people digitally manipulate an image of a young person into an existing nude online
- images created or shared are used to abuse peers e.g. by selling images online or obtaining images to share more widely without consent to publicly shame. Such images can be shared via web pages and social media accounts called 'Bait Out' pages/accounts.

Creating and sharing nudes and semi-nudes of under-18s (including those created and shared with consent) is illegal.

When handling reports of Youth Produced Sexual Imagery, **staff must be aware that it is illegal for staff to view or share such imagery**. Staff should immediately inform the Designated Safeguarding Lead who will act in accordance with non-statutory guidance, [Sharing Nudes and Semi-Nudes. Advice for Education Settings working with Children and Young People 2020](#).

In school we try to create an environment where children feel safe to make a disclosure and ask children to name a 'safe adult' within school. Through the computing, RSE and PHSE curriculum we demonstrate the importance of respect for our bodies and keeping safe online.

Training has included informing children that consent to share an image is not acceptable. Staff must not view inappropriate images but must go straight to the DSL. The DSL will then contact MASH and parents and the police if necessary .

35. BULLYING (INCLUDING CYBERBULLYING)

Bullying is a very serious issue that can cause anxiety and distress. All incidences of bullying, including cyber-bullying and prejudice-based bullying should be reported and will be managed through the school's Anti-Bullying Policy/Pupil Behaviour Policy/Child-on-child abuse Policy, [in accordance with Keeping Children Safe in Education 2023 and Behaviour in Schools. Advice for Head teacher and School Staff \(September 2022\)](#).

The Pupil Online Safety Policy also offers guidance on cyberbullying.

"Cyberbullying" can be defined as "the use of modern communication technologies to embarrass, humiliate, threaten or intimidate an individual in the attempt to gain power and control over them."

If cyberbullying takes place, adults should keep records of the abuse, texts, e-mails, website or instant messages and should not delete the said texts, e-mails or messages. Adults are advised to take screen prints of messages or web pages and to be careful to record the time, date and location of the site.

Trolling" can be defined as "circumstances where a person sows discord on the internet by starting arguments or upsetting people by posting inflammatory messages in an online community with the deliberate intent of provoking readers into an emotional response;"

If trolling occurs, adults are advised to take screen prints of messages and should not delete any evidence of trolling.

Adults must report all incidents of cyberbullying and/or trolling to the Headteacher. Any such incidents will be taken very seriously.

Pupils may become exposed to inappropriate material of a sexual, violent or extremist nature and may come into contact with people who seek to 'groom' young people and encourage inappropriate, dangerous and in some cases illegal activities and behaviours.

As part of the statutory Computing curriculum we teach children how to deal with issues such as cyberbullying and trolling. We do this using resources, guidelines and materials offered by Kidsmart, Think U Know, Childnet and Common Sense Media to teach children how to use social networking and messaging/chat apps and tools safely and appropriately.

Pupils are not allowed to use social networking sites in school and are reminded that such sites usually have age restrictions – 13 and older in most cases.

A supplementary document with age restrictions is shown to children and parents throughout the school.

Pupils may take part in discussion forums that teachers have evaluated as part of specific lesson activities. Individual pupil names or identifying information will never be used. Please see the school Pupil Online Safety Policy and Anti Bullying policy for more details on how the school approaches Cyberbullying.

36. HOMELESSNESS

Indicators that a family may be at risk of homelessness include household debt, rent arrears, domestic abuse and anti-social behaviour, as well as the family being asked to leave a property. The Homelessness Reduction Act 2017 places a new legal duty on English councils so that everyone who is homeless or at risk of homelessness will have access to meaningful help including an assessment of their needs and circumstances, the development of a personalised housing plan, and work to help them retain their accommodation or find a new place to live.

The DSL will raise concerns at the earliest opportunity about a family at risk of homelessness through the [Tower Hamlets Homeless and Housing Options service](#).

Being homeless or being at risk of becoming homeless presents a real risk to a child's welfare. However, it is also recognised in some cases that 16 and 17 year olds could be living independently from their parents or guardians, for example through their exclusion from the family home, and will require a different level of intervention and support. Local authority children's social care will be the lead agency for these children and should be contacted in the first instance. [For general enquiries about support for young people who might be at risk of or experiencing homelessness in the borough, please contact Tower Hamlets Housing Options: \[Host@towerhamlets.gov.uk\]\(mailto:Host@towerhamlets.gov.uk\)](#)

37. CHILDREN AND THE COURT SYSTEM

Children are sometimes required to give evidence in criminal courts, either for crimes committed against them or for crimes they have witnessed.

The DSL will ensure that the children concerned are supported and where appropriate make use of the guides provided by the HM Courts & Tribunals Service for [children 5-11-year olds](#) and [12-17 year olds](#).

Making child arrangements via the family courts following parental separation can be stressful and entrench conflict in families. This can be stressful for children too. Where appropriate parents can be signposted to the Department of Justice's [information toolkit](#) for families on making child arrangements which sets out each party's responsibility including the importance of putting the needs of the children first in the process.

38. CHILDREN WITH FAMILY MEMBERS IN PRISON

An estimated 310,000 children every year have a parent in prison in England and Wales and 10,000 visits are made by children to our public prisons every week. These children are at risk of poor outcomes including poverty, stigma, isolation and poor mental health.

The DSL will draw upon the resources and guidance offered through [The National Information Centre on Children of Offenders](#) (NICCO) to support the children involved and mitigate negative consequences for those children.

39. PRIVATE FOSTERING

Private fostering occurs when a child under the age of 16 (under 18, if disabled) is provided with care and accommodation by a person who is not a parent, person with parental responsibility for them or a relative in their own home. A child is not privately fostered if the person caring for and accommodating them has done so for less than 28 days and does not intend to do so for longer.

Staff should be vigilant about children who are in private fostering arrangements and report concerns to the DSL, who will notify the Local Authority through a MASH referral, as set out in the THSCP Multi-Agency Private Fostering Guidance (January 2022). The Local Authority will check the arrangement is suitable and safe for the child in accordance with the [Private Fostering statutory guidance](#).

40. YOUNG CARERS

A young carer is a person aged 18 or under who cares, unpaid, for a friend or family member. This can include, but is not limited to a person with:

- a long-term illness or condition
- a physical or learning disability

- a substance misuse problem
- a mental health problem

The support provided by a child can vary based on the condition of the person they are caring for, but typically young carers provide a combination of personal (such as helping to dress or bath them), practical (such as cooking, cleaning and shopping) and emotional care (such as talking through their concerns with them).

It is estimated by the Children's Society that 1 in 5 children are young carers and many are hidden and unidentified. School recognises that young carers have the right to an assessment by the Local Authority to identify needs and support and the person they are caring for can have a reassessment of their needs.

The DSL will follow the LBTH guidance for schools, 'Young Carers in School: A guide for education practitioners to identify and support young carers in schools' ([January 2023](#)) and refer to the Young Carers program accordingly: Young.Carers@towerhamlets.gov.uk

41. CHILD ABDUCTION AND COMMUNITY SAFETY INCIDENTS

Child abduction is the unauthorised removal or retention of a child from a parent or anyone with legal responsibility for the child. Child abduction can be committed by parents or other family members; by people known but not related to the victim (such as neighbours, friends and acquaintances); and by strangers.

All incidents of Child Abduction should be reported immediately to the Police and Children's Social Care.

Other community safety incidents in the vicinity of a school can raise concerns amongst staff, children and parents, for example, people loitering nearby or unknown adults engaging children in conversation. All incidents that occur during the school day should be immediately reported to the DSL, and steps taken to ensure the safety and well-being of the children involved.

42. MODERN SLAVERY

Modern slavery encompasses human trafficking and slavery, servitude and forced or compulsory labour. Exploitation can take many forms, including: sexual exploitation, forced labour, slavery, servitude, forced criminality and the removal of organs.

Further information on the signs that someone may be a victim of modern slavery, the support available to victims and how to refer to the National Referral Mechanism is available in the [Modern Slavery Statutory Guidance](#).

The DSL will refer all potential child victims of modern slavery to the Local Authority via MASH.

43. TAKING SAFEGUARDING ACTION

Any child, in any family in any school could become a victim of abuse. Staff should always maintain an attitude of “it could happen here”. Key points for staff to remember are:

- in an emergency take the action necessary to help the child (including calling 999);
- report your concern as soon as possible to the DSL, no later than the end of the day;
- do not start your own investigation;
- share information on a need-to-know basis only – do not discuss the issue with colleagues, friends or family;
- complete a record of concern (See Appendix 2 and 4);
- seek support for yourself if you are distressed.

44. EARLY HELP

All staff are trained and prepared to identify children who may benefit from Early Help, which is providing support as soon as a problem emerges at any point in a child's life. **This can be support provided through school's internal pastoral system and resources and/or Local Authority services and other external agencies.**

The Tower Hamlets Early Help Strategy recognises the important role schools have in identifying children and families who are at risk of poor outcomes without early intervention.

All staff need to recognise that all children may benefit from Early Help at any point in their childhood, but some children may benefit from Early Help more than others. These are children with known vulnerabilities, which are listed on page 9 of this policy.

Early Help Strategy:

Within the school we can offer support from a mental health lead co-ordinated by the Attendance and Welfare Officer.

We have a play therapist who operates one day a week and will take referrals that are appropriate to her capacity and remit. She will also liaise with parents;

We may hold team around the child meetings so that professionals can support the needs of the child and the family

We may signpost to the LBTH Early Help Hub for further advice/support via parenting programmes, employment services and mental health services.

The DSL will contact the LBTH Early Help Hub for support and advice if required:

LBTH Early Help Hub:
0207 364 5006 (option 2)

Alternatively, the DSL will complete an Early Help Enquiry form which can be accessed via <https://bit.ly/2AA2WNy>

Social Inclusion Panel

When an EHA has been completed and a Team Around the Family is in process, the school can refer to the borough's Social Inclusion Panel in support of a co-ordinated and targeted plan to bring about improvement in the child's outcomes.

The DSL will apply the LBTH Thresholds Guidance to decide what level of safeguarding response is required as part of the Early Help response. If in doubt about the level of need the DSL will telephone the LBTH Multi Agency Safeguarding Hub (MASH) for a discussion.

MASH:

020 7364 5006 (Option 3) 020 7364 5601/5606

Child Protection Advice Line

020 7364 3444

If a child has been receiving Early Help support from the school and other agencies and there is no improvement in the child's outcomes, then the DSL must refer the child to Children's Social Care.

45. HANDLING THE REPORTING OR SHARING OF CONCERNS

When a child shares that they have been or are being abused including exploitation and neglect, they may feel ashamed, especially if the abuse is sexual, and may feel frightened lest their abuser finds out they have sought help and support from a professional. The child may have been threatened and may have lost all trust in adults; or they may believe that they are to blame for the abuse. Sometimes the child may not understand that what is happening is abusive.

All staff should reassure children that what they are sharing is being taken seriously and that they will be supported and kept safe. A child should never be given the impression that they are creating a problem by reporting abuse, sexual violence or sexual harassment. Nor should a child ever be made to feel ashamed for making a report.

Staff should never promise a child that they will not tell anyone about a report of abuse, as this may ultimately not be in the best interests of the child. During their conversations with the pupils, staff will:

- allow the child to speak freely

- remain calm
- allow silences
- refrain from asking leading questions
- tell the pupil what will happen next
- inform the DSL as soon as possible
- seek support from their line manager if they feel distressed.

St Agnes will notify parents if they feel it appropriate at the earliest possible opportunity. If there is a safeguarding risk in reporting to parents – then the school – if requested not to by MASH- will refrain from so doing.

46. CONFIDENTIALITY AND SHARING INFORMATION

Staff should never assume a colleague or another professional will take safeguarding action through the sharing of information that might be critical in keeping children safe. Staff should be mindful that early information sharing is vital for effective identification, assessment and allocation of appropriate service provision. Serious Case Reviews have highlighted failures in safeguarding systems in which people did not share information at the earliest opportunity or did not share at all. If in any doubt about sharing information, staff should speak to their Designated Safeguarding Lead or a deputy.

Fears about sharing information must not be allowed to stand in the way of the need to promote the welfare and protect the safety of children.

All staff should understand that safeguarding requires a high level of confidentiality. Staff should only discuss concerns with the DSL, Deputy DSL or the headteacher.

Any member of staff can contact children's social care if they are concerned about a child but should inform the DSL as soon as possible that they have done so.

The DSL will have due regard to the Data Protection Act 2018 and General Data Protection Regulation (GDPR) to ensure that personal information is processed fairly and lawfully and they will adhere to the seven golden rules for sharing information. Information sharing will take place in a timely and secure manner.

The GDPR and the Data Protection Act 2018 do not prevent school staff from sharing information with relevant agencies, as safeguarding and protecting children provide a legal basis for sharing information.

It is not necessary to gain consent when to do so would put the child at further risk of harm.

Information sharing decisions will be recorded, whether or not the decision to share has been taken. Child protection information will be stored securely and separate from the pupil's school file. Child protection information is stored and handled in line with the

school's Retention and Destruction Policy. Where safeguarding information is stored electronically and online, the school has cybersecurity measures in place, which meets the Department for Education's [Cybersecurity Standards](#), to ensure the data is safe and not vulnerable to evolving cyber-crime.

47. REFERRING TO CHILDREN'S SOCIAL CARE

The DSL will make a referral to children's social care applying the LBTH Threshold Guidance if it is believed that a pupil is suffering or is at risk of suffering significant harm, or the child is considered to be in need, that is a child who is unlikely to achieve or maintain a reasonable level of health or development, or whose health and development is likely to be significantly or further impaired, without the provision of services.

LBTH Multi-Agency Safeguarding Hub:

020 7364 5006 (Option 3) 020 7364 5601/5606

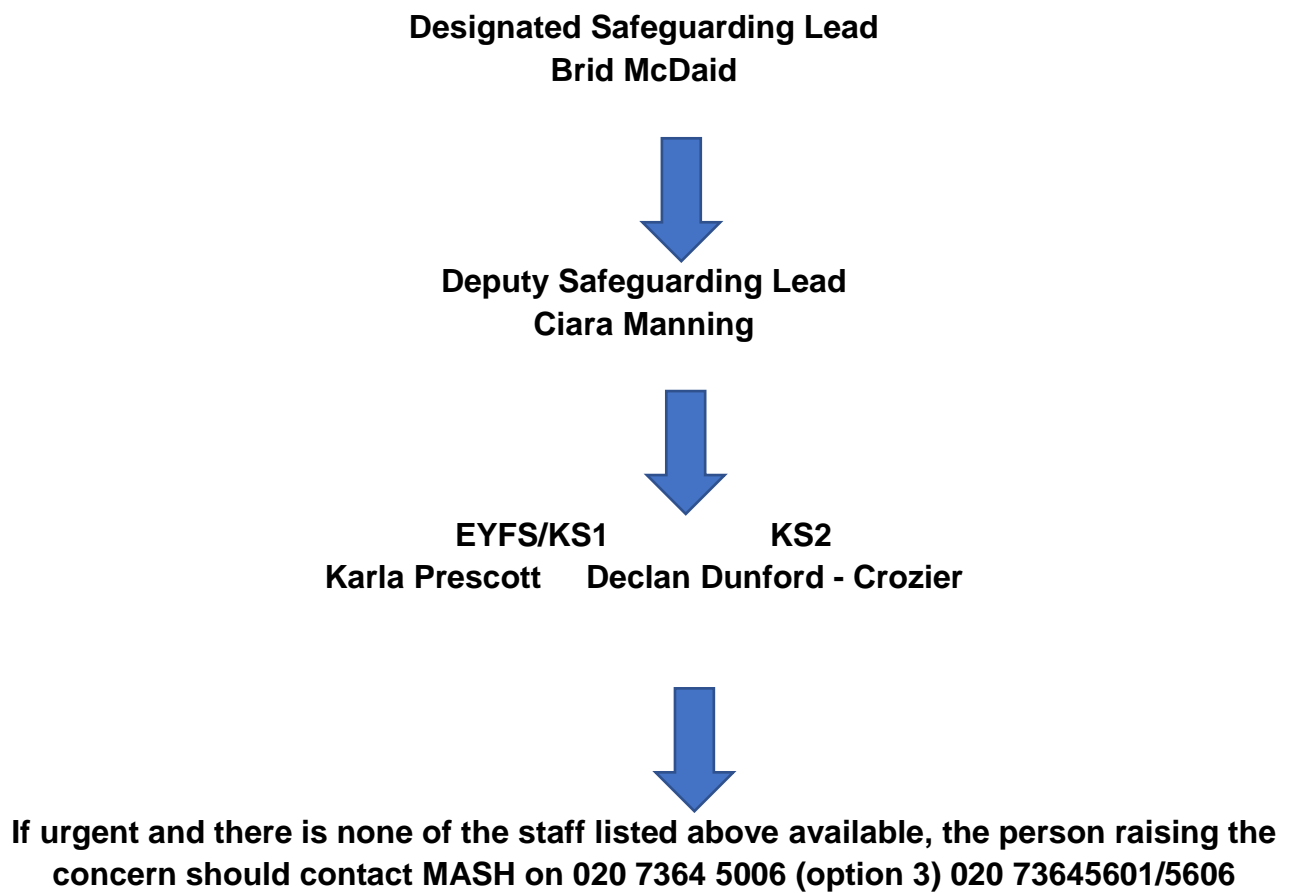
Child Protection Advice Line:

020 7364 3444

The DSL will contact CPAL/MASH in the first instance to seek advice and guidance. When the DSL completes a MASH referral form and sends it securely to the Multi-Agency Safeguarding Hub, the referral form will be accurate and sufficiently detailed to enable the MASH Assessment and Intervention Team to make a decision on the level of statutory response required in accordance with the [LBTH Thresholds Guidance](#).

If the child is already known to Children's Social Care, then the DSL will communicate safeguarding concerns to the allocated Social Worker.

Flow Chart for handling reports within the school.



Once the individual has been alerted, the concerns are reviewed and a decision made regarding next steps, preferably with the DSL. The options are



Decision to monitor the concern		Decision to discuss the decision informally with parents		Decision made to refer the concern to social care, via LBTH MASH Referral Form and phone call to Child Protection Advice Line.
--	--	---	--	---



Class teacher asked to monitor child and feedback to the Designated Safeguarding Lead within an agreed timescale.	Monitor	Once discussed with parents DSL decides to discuss with parents, monitor or refer to social care	Refer	DSL discuss decision with the members of the CP team, and agree to refer to social care.	
--	----------------	---	--------------	---	--



In exceptional circumstances, concerns may be referred directly to children's social care.		Designated Safeguarding Lead keeps concerns forms in secure, confidential safeguarding file.		Contact Details for Social Care Referrals: Child Protection Advice (MASH) 020 7364 5006 (Option 3) 020 7364 5601/5606 Early Help Hub LBTH Early Help Hub: 0207 364 5006 (option 2)	
---	--	---	--	--	--

NSPCC Whistleblowing Helpline: 0800 028 0285

A yellow form kept in the staffroom is used for all staff for logging child disclosures. Remember (when completing the yellow forms) yours is a listening role, do not interrupt the child if he or she is recalling a significant event. Any questions that may be needed to clarify what the child is saying should be framed in an open manner and not lead the child in any way.

A low level concern form (also kept in the staffroom) is used by staff to register concern of a lower level by an adult in the school towards a pupil.

48. ESCALATION PROCEDURES

If, after a referral to Children's Social Care, the child's situation does not appear to be improving, the DSL will consider following local escalation procedures to ensure their concerns have been addressed and that the child's situation improves.

In accordance with the Tower Hamlets Threshold Guidance (Appendix D) the DSL will first make contact with the team manager followed by the service manager followed by the divisional director. At every level of escalation there should be discussion and concerted effort to resolve any professional difference. **It is important that the DSL at each point of escalation puts the concerns in writing.**

Appendix 1: MASH Poster

Appendix 2: School Record of Concern Form (yellow form updated Sept 22)

Appendix 3: MASH Interagency Referral Form

Appendix 4: Low level concerns displayed by adults reporting form

Appendix 5: Age description – Social Media



Multi-Agency Safeguarding Hub (MASH) 020 7364 3444 / 5601 / 5606

If there is a concern about the welfare of a child or young person and you would like to talk it through, then you should contact the Tower Hamlets Children and Culture Directorate's Multi-Agency Safeguarding Hub (MASH).

The Duty Officer will be able to discuss the concern, assist in deciding whether a formal child protection referral is appropriate and facilitate the reporting of a formal child protection referral in accordance with Tower Hamlets Safeguarding Children Partnership (THSCP) Procedures and to offer advice.

When there is a specific concern of a child protection nature whereby it is thought that a child has been harmed or at risk of being harmed then the LBTH Inter-Agency Referral Form should be completed in the first instance. The MASH should then be contacted on 0207 364 3444 / 5601 / 5606 to discuss the matter and the completed Inter-Agency Referral Form then emailed/faxed through.

The MASH operates between 9.00am and 5.00pm except at weekends and on public holidays. If the concern arises outside of the hours operated by the MASH and it is believed the child may be at immediate risk the Children's Social Care Emergency Out of Hours Duty Team or the Police should be contacted without delay.

Important Contact Information

Multi-Agency Safeguarding Hub (MASH) email Note – information should only be emailed following prior discussion with the Duty Officer.	MASH@towerhamlets.gov.uk
Children's Social Care Emergency Out of Hours Duty Team (5.00pm onwards)	020 7364 5006 – choose Option 3
Child Abuse Investigation Team (CAIT)	020- 8217 6484 (or use 999 if not available)

SEPTEMBER 2020

Appendix 2
Safeguarding Incident/Concern Form

Child name:

Name and position of person completing form (PRINT)

Date of incident /concern:

Where in the school:

Incident/concern; (who, what, when, as accurately as possible)

Action taken and Outcomes*(NB – this section is to be completed by DSL)

pto...

Signature: (name of member of staff)

Role:

Signature of DSL	Date (DD MM YY)
------------------	-----------------

INTER-AGENCY REFERRAL FORM

This form is to be used by all agencies referring child/children to London Borough of Tower Hamlets CSC for assessment as a child in need, including in need of protection.

All urgent referrals should be initiated by phone/fax and with completion of as much of this form as possible or an updated CAF or a Signs of Safety Mapping tool. If information is incomplete, a MASH worker will work through the form to ensure the information is accurate and good quality. If you are a service provider in Tower Hamlets, as part of the Family Wellbeing Model, you may be asked to provide a CAF as well as this form. You should get feedback within 24 hours on this referral and we will proactively work with you and other services to ensure a service is provided to the child, even if it does not meet the thresholds for a statutory response as outlined in the Family Wellbeing Model.

A. CHILD/ YOUNG PERSON

Family Name						Forename/s					
DOB/EDD		M		F		*Ethnicity code		Religion			
Child's first language						Is an interpreter or signer required?					
Address											
Postcode						Tel.					
Current address if different from above											
FULL NAME						Tel.:		Ethnicity code	Parental responsibility		
First language of carer						ed: Y / N					

Postcode			
----------	--	--	--

***ONS Ethnicity Codes:** White British 1a; White Irish 1b; White other 1c; White & Black Caribbean 2a; White & Black African 2b; White & Asian 2c; Other Mixed 2d; Indian 3a; Pakistani 3b; Bangladeshi 3c; Other Asian 3d; Caribbean 4a; African 4b; Other Black 4c; Chinese 5a; Other ethnic group 5b

B. CHILD/YOUNG PERSON'S PRINCIPAL CARERS

C. OTHER HOUSEHOLD MEMBERS

FULL NAME	DOB If known	Relationship to child/ young person	Ethnicity code	Tick if also referred

D. OTHER SIGNIFICANT PEOPLE IN THE CHILD/YOUNG PERSON'S LIFE, INCLUDING OTHER FAMILY MEMBERS

FULL NAME	Relationship to child/young person	Address	Tel No

Referrals will be shared with the family and should not be made without their knowledge/agreement unless this would jeopardise the child/young person's safety

	Y / N	If no, state reason
The child/young person knows about the referral		

The parent/carer knows about the referral		
The parent/carer has given consent to the referral.		

F. INFORMATION ON STATUTORY STATUS

	Y/ N	Please give details of name of child/young person, dates, category (if known)
Any child in family is/has been on the disability register?		
Any child in family is/has been on the child protection register (CPR)?		
Any child or other family member has been looked after by a local authority?		

G. KEY AGENCIES INVOLVED

Insert name of professional if involved		Tel	Insert Name of professional if involved		Tel
H.V.			G.P.		
Nursery			EWO		
School			Police		
YOT			Dentist		
Community mental health			Community Paediatrician		
School Nurse			Midwife		
Hospital Consultant			Other		

H. INFORMATION SUPPORTING THIS REFERRAL

The purpose of this section is to assist the inter-agency assessment. Where you have no information about a particular area, please write N/K (not known). Please record strengths as well as areas of need or risk so that resources can be directed appropriately.

REASON FOR REFERRAL/REQUEST FOR SERVICES

What are your concerns? (If an allegation of possible physical abuse, please give specific details of any injury including dates and explanations given)

Scale how safe you think the child is:
<i>With 0 being I am certain the abuse will happen again if something is n't done immediately and 10 being the case needs action but I don't think the child is in immediate danger, what rating would you give?</i>
Comments on Score: Please tell us how you reached this score.
<i>What existing safety is there for the child(ren) – are there safe people around the child?</i>
<i>What are you most worried will happen to the child(ren) if the situation doesn't change?</i>
<i>What convinced you to take action now and contact us?</i>
<i>Have you done anything to address this problem (apart from making this referral)? For example has your agency used a CAF or a TAC to focus professional efforts on addressing the concerns? Has the Social Inclusion Panel been consulted for support?</i>
<i>What do you see as the cause of the problem?</i>
<i>What do you expect to happen as a result of this notification?</i>

I. DETAILS OF REFERRER AND SOCIAL WORKER TAKING REFERRAL

Name of worker completing this referral (please print)			
Agency			
Address			
Ward/Consultant			
Telephone number			
Signature		Date	

Name of social worker taking referral			
Team		Date	

Social work context scale (for social worker to complete):

On a scale of 0 to 10 with 0 being this is the worst case that the agency has ever worked with and 10 indicates that this is a case the agency would take no further action with, where would you rate yourself?

Appendix 4: Low level concerns from Adults towards children

Low-Level Record of Concern Regarding A Staff Member

Please use this form to share any concern – no matter how small, and even if no more than a ‘nagging doubt’ – that an adult may have acted in a manner which:

- is not consistent with St Agnes Code of Conduct, and/or;
- relates to their conduct outside of work which, even if not linked to a particular act or omission, has caused a sense of unease about that adult’s suitability to work with children.

Where possible please speak with the Head Teacher as soon as possible. It is also helpful to document your concerns, which can be done using this form and then passed to the Head Teacher. When completed, please pass this form to the Head Teacher. If the concern is about the Head Teacher, please pass it onto the Chair of Governors

Remember, a low-level concern is different to an allegation (which uses a different form). See the table below for a definition:

Allegation

Behaviour which indicates that an adult who works with children has:

- behaved in a way that has harmed a child, or may have harmed a child;
- possibly committed a criminal offence against or related to a child;
- behaved towards a child or children in a way that indicates they may pose a risk of harm to children.

Low-Level Concern

Any concern – no matter how small, even if no more than a ‘nagging doubt’ – that an adult may have acted in a manner which:

- is not consistent with an organisation’s Code of Conduct, and/or
- relates to their conduct outside of work which, even if not linked to a particular act or omission, has caused a sense of unease about that adult’s suitability to work with children.

Appropriate Conduct

Behaviour which is entirely consistent with the organisation’s Code of Conduct, and the law.

Name of adult writing this concern: -----

Name of adult whom this concern is about: -----

Date written:

Signature:

Please write your concerns below (continue overleaf)

You should provide a concise record – including brief context in which the low-level concern arose, and details which are chronological, and as precise and accurate as possible – of any such concern and relevant incident(s) (and please use a separate sheet if necessary). Consider any contextual information that may be appropriate to know.

Appendix 5

Age Restrictions for Social Media Platforms

What is the minimum age for account holders on these social media sites and apps?

Under 13



13+



16+



17+



Sourced from NSPCC website October 2019